



Emerald 9250 Series Pulse Generator Operating Manual



Quantum Composers, Inc.
P.O. Box 4248
Bozeman, MT 59772
1.800.510.6530
www.QuantumComposers.com
sales@QuantumComposers.com

Contents

1. INTRODUCTION	5
TECHNICAL SUPPORT	5
WARRANTY	5
PACKAGE CONTENTS	5
2. SAFETY ISSUES	6
3. FRONT & BACK PANEL OVERVIEW	7
FRONT PANEL	7
Indicators	7
Run/Stop/Power Button	7
BACK PANEL	8
Indicators	8
BNC Output Connectors	8
USB	8
Power Input	8
4. PULSE CONCEPTS AND PULSE GENERATOR OPERATIONS	9
COUNTER ARCHITECTURE OVERVIEW	9
SYSTEM TIMER FUNCTIONS	9
CHANNEL TIMER FUNCTIONS	10
DIGITAL OUTPUT MULTIPLEXER	10
DEPENDENT & INDEPENDENT TIMING EVENTS (SYNC FUNCTION)	10
NAVIGATING THE 9250	11
ENABLING SYSTEM OUTPUT	11
SMOOTH TRANSITION UPDATING	11
PULSE WIDTH & DELAY NOTES	12
5. 9250 SETUP	13
OVERVIEW	13
POWER	13
COMMUNICATION	13
USB	13
DRIVER INSTALLATION (WINDOWS XP)	14
DRIVER INSTALLATION (WINDOWS 7)	14
6. 9250 APPLICATION	15
9250 APPLICATION OVERVIEW	15
BASIC OPERATION	16
System Section	16
Channels Section	18
Virtual Channels	20
Enhanced Options	21
COMMAND TERMINAL	22
PARAMETER STORAGE	22
Saving Custom Settings to a Bin	22

<i>Recalling Custom Settings from a Bin</i>	23
7. OPERATING THE 9250	25
NORMAL INTERNAL RATE GENERATOR OPERATION	25
<i>Continuous Mode</i>	25
<i>Single Shot Mode</i>	26
<i>System Burst Mode Function</i>	26
<i>System Duty Cycle Function</i>	26
CHANNEL TIMER OVERVIEW	27
<i>Channel Normal Function</i>	27
<i>Channel Single Shot Function</i>	27
<i>Channel Burst Mode</i>	28
<i>Channel Duty Cycle Mode</i>	28
EXTERNAL INPUT OVERVIEW	29
<i>Generate a Pulse on Every Trigger Input</i>	29
<i>Using the External Gate to Control the System</i>	30
<i>Using the External Gate to Control the Channel</i>	30
OUTPUT EXAMPLES.....	31
8. PROGRAMMING THE 9250	32
PERSONAL COMPUTER TO 9250 COMMUNICATION	32
<i>USB Interface Overview</i>	32
PROGRAMMING COMMAND TYPES AND FORMAT	32
<i>Line Termination</i>	33
<i>IEEE 488.2 Common Command Format</i>	33
<i>SCPI Command Keywords</i>	33
<i>SCPI Command Format</i>	34
<i>SCPI Keyword Separator</i>	34
<i>SCPI Optional Keywords</i>	34
<i>SCPI Parameter Types</i>	35
<i>Error Codes</i>	35
<i>Programming Examples</i>	35
9250 SCPI COMMAND SUMMARY	37
IEEE 488.2 COMMON COMMANDS	41
9. APPENDIX A – SPECIFICATIONS	42
9250 SPECIFICATIONS.....	42
10. APPENDIX B – BLUETOOTH OPTION	45
OVERVIEW	45
POWER.....	45
INITIALIZATION & CONNECTIVITY	45
11. APPENDIX C – TZ50 (IMPEDANCE MATCH OPTION)	47
TZ50 OVERVIEW.....	47
TZ50 SPECIFICATIONS	47
<i>Terminating Into 50 Ohms</i>	48
<i>Terminating Into High Impedance</i>	48

12.	APPENDIX D – SAFETY SYMBOLS.....	49
	SAFETY MARKING SYMBOLS.....	49
13.	APPENDIX E – CE/UKCA DECLARATION OF CONFORMITY	51

1. Introduction

This manual is a reference designed to familiarize you with the Quantum Composers 9250 series pulse generator and is arranged so that you can easily find the information you're looking for. Generally, each topic has its own section and no section assumes that you've read anything else in the manual.

Technical Support

For questions or comments about operating the 9250 our technical staff can be reached via one of the following methods:

- Phone - (406) 582-0227
- Fax - (406) 582-0237
- Internet - www.quantumcomposers.com

Warranty

In addition to a 30-day money back guarantee, the 9250 has a two-year limited warranty from the date of delivery. This warranty covers defects in materials and workmanship. Quantum Composers will repair or replace any defective unit. Contact us for information on obtaining warranty service.

Package Contents

The box you receive should contain the following:

- 9250 Pulse Generator
- User's Manual, Drivers, & 9250 application on Disc
- USB Cord
- 5VDC (10W) Wall Adapter Power Supply

Contact Quantum Composers at 1 (406) 582-0227 if any parts are missing. Updated CD contents and/or support are available from the web site at: www.quantumcomposers.com

2. Safety Issues

Normal use of test equipment presents a certain amount of danger due to electrical shock because it may be necessary for testing to be performed where voltage is exposed.

An electrical shock causing 10 milliamps of current to pass through the heart will stop most human heartbeats. Voltage as low as 35 VDC or 35 V_{RMS} AC should be considered dangerous and hazardous, as it can produce a lethal current under certain conditions. Higher voltages pose an even greater threat because such voltage can easily produce a lethal current. Your normal work habits should include all accepted practices that will prevent contact with exposed high voltage and steer current away from your heart in case of accidental contact with a high voltage. You will significantly reduce the risk factor if you know and observe the following safety precautions:

- If possible, familiarize yourself with the equipment being tested and the location of its high-voltage points. However, remember that high voltage may appear at unexpected points in defective equipment.
- Do not expose high voltage needlessly. Remove housing and covers only when necessary. Turn off equipment while making test connections in high-voltage circuits. Discharge high-voltage capacitors after shutting down power.
- When testing AC powered equipment, remember that AC line voltage is usually present on power input circuits, such as the on-off switch, fuses, power transformer, etc.
- Use an insulated floor material or a large, insulated floor mat to stand on, and an insulated work surface on which to place equipment. Make certain such surfaces are not damp or wet.
- Use the time-proven “one hand in the pocket” technique while handling an instrument probe. Be particularly careful to avoid contact with metal objects that could provide a good ground return path.
- Never work alone. Someone should always be nearby to render aid if necessary. Training in CPR first aid is highly recommended.

3. Front & Back Panel Overview

Front Panel

Indicators

A total of 6 separate LED indicators are included on the front panel of the 9250 series. The following details the type of indication they represent.

- Quantum Logo Indicates the unit is powered on and system status.
- Channel A-D Indicates which channels are in the enabled state.
- Active Indicates the unit is armed and/or channels are actively pulsing (or waiting to be triggered).

Run/Stop/Power Button

The Run/Stop button serves the dual purpose of both powering on/off the unit as well as enabling/disabling the system output. It should be noted that only a short press is needed to both turn on and arm/disarm the unit. The button needs to be pressed and held for approximately 1 second in order to power off the unit. In the power off sequence the active settings are saved and reloaded when the unit is power back on.

The following image represents the front panel of a 9250:

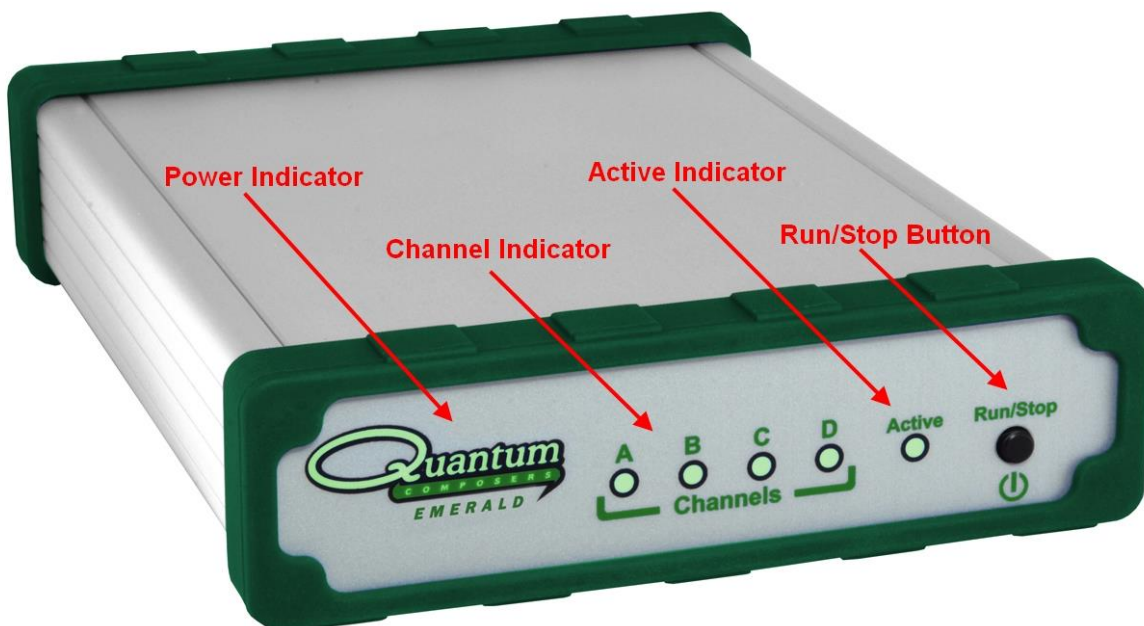


Figure 3.1 - 9250 Front Panel

Back Panel

Indicators

A total of 4 LED indicators are included on the back panel of the 9250. The following further details the type of indication they represent.

- PWR Indicates the unit is powered on.
- Active Indicates the armed channels are actively pulsing (or waiting to be triggered).
- Gate/Trig Indicates which mode the external input is in. If neither is illuminated, the unit is in internally triggered mode.

BNC Output Connectors

Standard BNC connectors are found on the back panel which output the pulses for their respective channel.

USB

A “Standard B” female type USB connector is found on the back panel. This allows for communication with the unit (on standard units).

Power Input

A standard, circular female plug (5.5mmx2.1mm) can found on the back panel below the USB connector. This provides power to the unit.

The following image represents the back panel of a 9250:

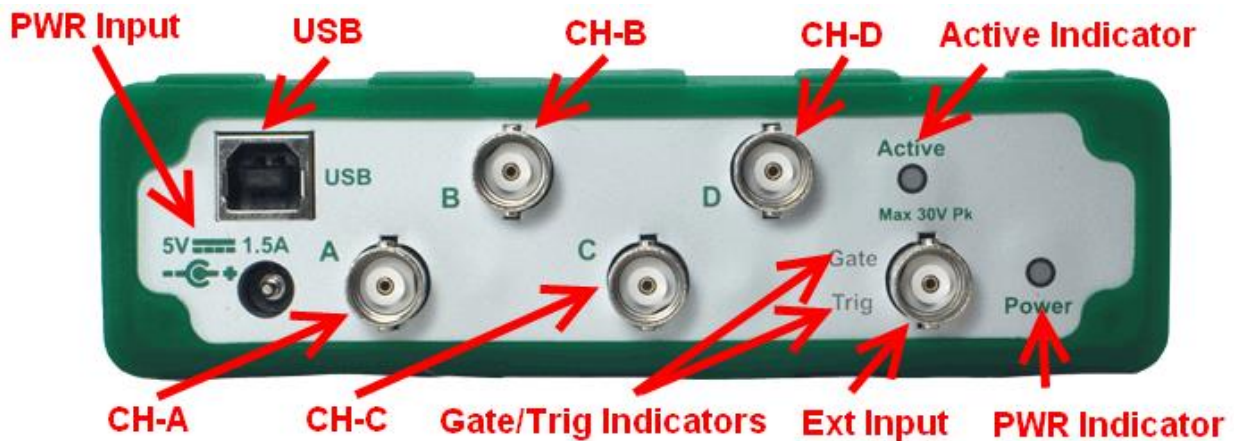
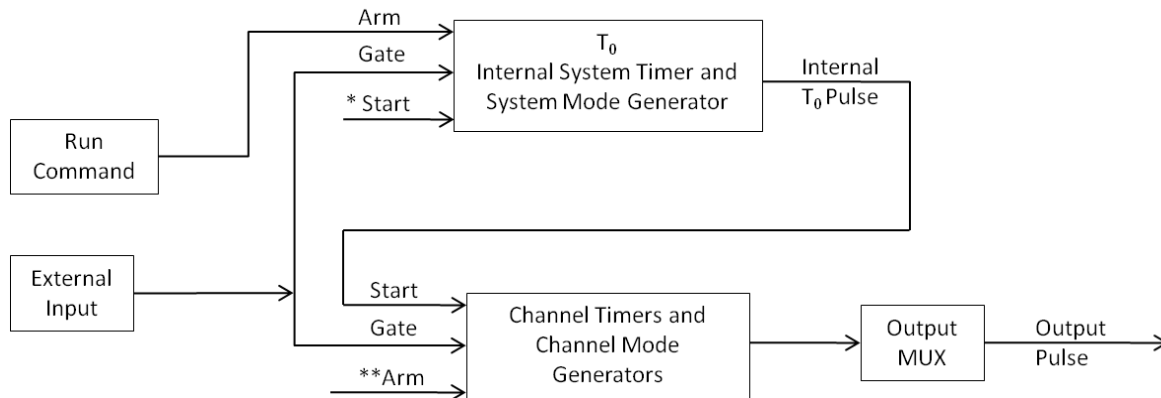


Figure 3.2- 9250 Back Panel

4. Pulse Concepts and Pulse Generator Operations

Counter Architecture Overview



*Start source is: Run/Stop button/function in Internal Modes
External input in External Trigger modes
*TRG command via Serial access

**Channels are armed by the Run/Stop function (external button or through 9250 application).
In single shot and burst modes channels may be rearmed by pressing the RUN button again.

System Timer Functions

The System Timer functions as a non-retriggerable, multi-vibrator pulse generator. This means that once started, depending on the mode, the timer will produce pulses continuously. Before pulses can be generated, the timer must be armed and then receive a start pulse. Arming the counter is done by enabling the Run/Stop function by either the external button or through the 9250 application. With external trigger disabled, the Run/Stop function also generates the start command for the counter. With external trigger enabled, the external trigger provides the start pulse. In either case, once started, the counter operation is determined by the System Mode Generator. Standard modes include:

- Continuous Once started T₀ pulses are generated continuously.
- Single Shot One T₀ pulse is generated for each start command.
- Burst 'N' T₀ pulses are generated for each start command.
- Duty Cycle Once started T₀ pulses cycle on and off continuously.

The T₀ pulse is distributed to all of the start inputs of the Channel Timers and Mode Generators.

Channel Timer Functions

The Channel Timer functions as a non-retriggerable, delayed, one shot pulse generator. This means that the timer will only generate one delayed pulse for every start pulse received. Once the channel timer has started counting, additional start pulses will be ignored until the pulse has been completed (non-retriggerable). The start pulse for each channel is provided by the internal T_0 pulse generated by the internal system timer. Whether or not a pulse is generated for each T_0 pulse is determined by the Channel Mode Generator. Standard modes include:

- Normal A pulse is generated for each T_0 pulse.
- Single Shot One pulse is generated for the first T_0 pulse, after which the output is inhibited.
- Burst 'N' number of pulses are generated for each T_0 pulse, after which the output is inhibited.
- Duty Cycle 'N' number of pulses are produced, one for each T_0 pulse, after which 'M' number of pulses will be inhibited, one for each T_0 pulse. The cycle is then repeated for each subsequent T_0 pulse.

A Different mode may be selected for each channel, allowing a wide variety of output combinations. Each output may also be independently disabled or gated (using the external gate input).

Digital Output Multiplexer

The outputs of each of the Channel Timers are routed to a set of multiplexers. This allows routing of any or all Channel Timers to any or all of the units' outputs. In the normal mode of operation, the output of the n^{th} Channel Timer is routed to the n^{th} output connector. As an example, if a double pulse is required on Channel A, one can multiplex the Channel A timer with the Channel B timer, then adjust each timer to provide the necessary pulses. Only the timing parameters are multiplexed together, not the actual output amplitudes.

Dependent & Independent Timing Events (Sync Function)

The 9250 allows the user to control the relationship between the Channel Timers by setting the sync source for each timer. Independent events are all timed relative to the internal T_0 start pulse. Dependent events may be linked together by setting the sync source to the controlling event. This allows the instrument to match the timed events and adjustments can be made in one event without detuning the timing between it and the dependent event.

Navigating the 9250

Primary control of the 9250 is carried out either through the 9250 application (see 9250 application Menus) or through unit specific commands using a terminal program via USB (see Programming the 9250). Communication through Bluetooth is also available as an upgrade which will allow the same user interfaces as USB. The Run/Stop button serves the purpose of both power on/off as well as enabling/disabling the system output.

Enabling System Output

The Run/Stop button on the 9250 is used to arm the system. With external trigger disabled, the button will arm and start pulse output. With external trigger enabled, the button will arm the pulse generator. Pulse outputs then starts after the first valid trigger input. Pressing the Run/Stop button a second time disables the pulse generator.

Smooth Transition Updating

Caution should be used when attempting to update the 9250's parameters when the unit is actively pulsing. The system counters are double buffered to insure that updating while the counters are active does not generate significant timing errors. A one clock error (4ns) may occur if the counters are reloaded during counter updates. To insure a smooth delay transition during an update, all channels must have completed their pulses at least 2us before the end of the period (Counter updates take 2us). It should be noted that if a delay jump *does* occur, only a single jump will occur before the unit's nominal desired delay is reached.

*Example in which initial delay jumps **may** occur while actively updating while pulsing:

	Width	Delay	Sync Source	Period
CHA	10us	9us	T0	100us
CHB	80us	10us	CHA	
CHC	20us	4us	T0	
CHD	50us	5us	CHC	

$$80\text{us}(\text{Width}) + 10\text{us}(\text{Delay}) + 9\text{us}(\text{Sync Source Delay}) = 99\text{us} \rightarrow \text{Within } 2\text{us} \text{ of Period (100us)}$$

*Example in which initial delay jumps **will not** occur while actively updating while pulsing:

	Width	Delay	Sync Source	Period
CHA	10us	5us	T0	100us
CHB	80us	10us	T0	
CHC	20us	4us	T0	
CHD	50us	5us	CHC	

80us(Width) + 10us(Delay) = 90us → NOT within 2us of Period (100us)

Pulse Width & Delay Notes

The following notes should be reviewed to understand the full capabilities and limitations of the pulse delays (rising edges) and widths (falling edges) on the 9250:

-Delay (rising edge) notes:

- Since a T0 signal output is not present, the delay accuracy is essentially the rising edge accuracy from channel-to-channel.
- There will be some inherent delay error when all channels have their respective delay values set to zero; although, these errors should all be well within the delay accuracy specification. Fine delay adjustments may be used to lower the error accordingly (i.e. The fine delays may be adjusted to line up the rising edges if higher accuracy is needed.)

-Width (falling edge) notes:

- The delay has 5ps resolution while the width only has 4 ns resolution; thus, when dynamically adjusting the delay, the width will only update in 2ns steps. This assures that the width accuracy specification is still met.

5. 9250 Setup

Overview

The 9250 can easily be interfaced by means of the included 9250 application. On standard models, a USB cable and a port with USB 2.0 capabilities or greater (recommended) are required to communicate with the unit. Bluetooth is available as an option if wireless communication is required. If the equipment is used in a manner not specified by the manufacturer, the protection provided by the equipment may be impaired.

Power

The 9250 requires a +5VDC \pm 250mV (\geq 1.5A) power supply to operate. The included wall adapter can be used to power the unit. The power adapter should be plugged into the rear panel of the unit that is labeled 5V – 1.5A. If a different power source is used, the required mating connector is a standard, circular female plug with the following dimensions: 5.5mm x 2.1 mm x 9.5mm (outer diameter x inner diameter x connector length). It is recommended that the AC Mains Socket-Outlet be easily accessible so that the external power supply can be easily removed from the AC Mains Socket Outlet.

The multi-functional power button, labeled “Run/Stop,” located on the front of the unit will turn on the 9250 when pressed once. Since the current consumption is dependent on the external loads, it is *highly* recommended that loads connected to any of the outputs be \geq 50 ohms. It should be noted that if 9250 consumes \geq 1.5A, the internal current sense circuit will cause the unit to go into a latched state, which is depicted by the flashing LED’s on the Quantum logo. In this state, all outputs will be inactive. In order to clear this state, the 9250 must be power cycled.

Communication

The 9250 provides a standard USB connection for remote communications. An optional Bluetooth feature is also available.

USB

When the 9250 is connected to a remote computer via the USB connection, the computer will recognize the unit as a “QC-PG”. Drivers will need to be installed for the remote computer to interface to the 9250. Drivers are included on the provided CD. Once the drivers have been installed, the 9250 will show up in the device manager as a USB to Serial Port Adapter. The 9250 can then be communicated with by either the included 9250 application or by using any generic communication terminal program. The unit is baud rate independent, so any speed can be selected. Typically a rate of 115,200bps can be used. The minimum suggested baud rate is 1,200bps.

Driver Installation (Windows XP)

1. Plug the 9250 into the computer using a USB cable. Make sure the unit is powered on.
2. The computer will display a message indicating it has found new hardware: "QC-PG".
3. The new hardware wizard will launch. Check the "Install from a list or specific location" option and click next.
4. Select "Search for the best driver in these locations" and check the option to "Include this location in the search". Click the browse button and locate the folder on the CD where the 9250 drivers are located. Click next.
5. A message window will launch asking if you want to continue installing this driver. Select the "Continue Anyway" button.
6. It should now indicate that it is installing a driver for a "QC-PG USB Communications Port".
7. Once the process is finished, a message will indicate that the drivers have been successfully installed.
8. You can now communicate with the 9250 using either the included 9250 application or by using any generic communication terminal program. You can view the Com Port number assigned to the 9250 in your computers device manager under Ports.

Driver Installation (Windows 7)

1. Plug the 9250 into the computer using a USB cable. Make sure the unit is powered on.
2. A message will pop up on the computer indicating it has found new hardware and is installing device driver software.
3. A message will indicate that the device drivers have not been successfully installed. The Action Center may then launch with a list of options. Close the Action Center and do not launch any of the actions.
4. Go to your computers device manager. This can be done by one of two ways. a) Right click on the desktop "Computer" icon and select properties. Select Device Manager on the left toolbar. b) Navigate to Control Panel and then Device Manager.
5. In Device Manager you should see a device under the Other Devices called the QC-PG. There will be a yellow exclamation point next to it.
6. Right click on the QC-PG and select update driver software.
7. Select "Browse My Computer" for driver software and browse to the location of the USB drivers for the 9250. The location is typically found on the software CD. It will contain a file called "9200cdc.inf". Select the folder in which the file resides, not the file itself. Click next.
8. Windows will then indicate a warning window that the drivers are not verified. Select "Install this driver software anyway".
9. A message will then indicate that the drivers have been successfully updated and a QC PG USB Communication Port is now available.
10. You can now communicate with the 9250 using either the included 9250 application or by using any generic communication terminal program. You can view the Com Port number assigned to the 9250 in your computers device manager under Ports.

6. 9250 Application

9250 Application Overview

Aside from using the SCPI command protocol, the included software application is the primary means of communication with the 9250. This application allows simple control of the 9250 unit via the USB or optional Bluetooth communications port. To run the software, simply double click on the application which can be found on the included CD. No installation is required. The software can also be copied to your computer and run from any location. The screenshot shown below (Figure 6.1) shows the 9250 application and all of the corresponding default parameters:

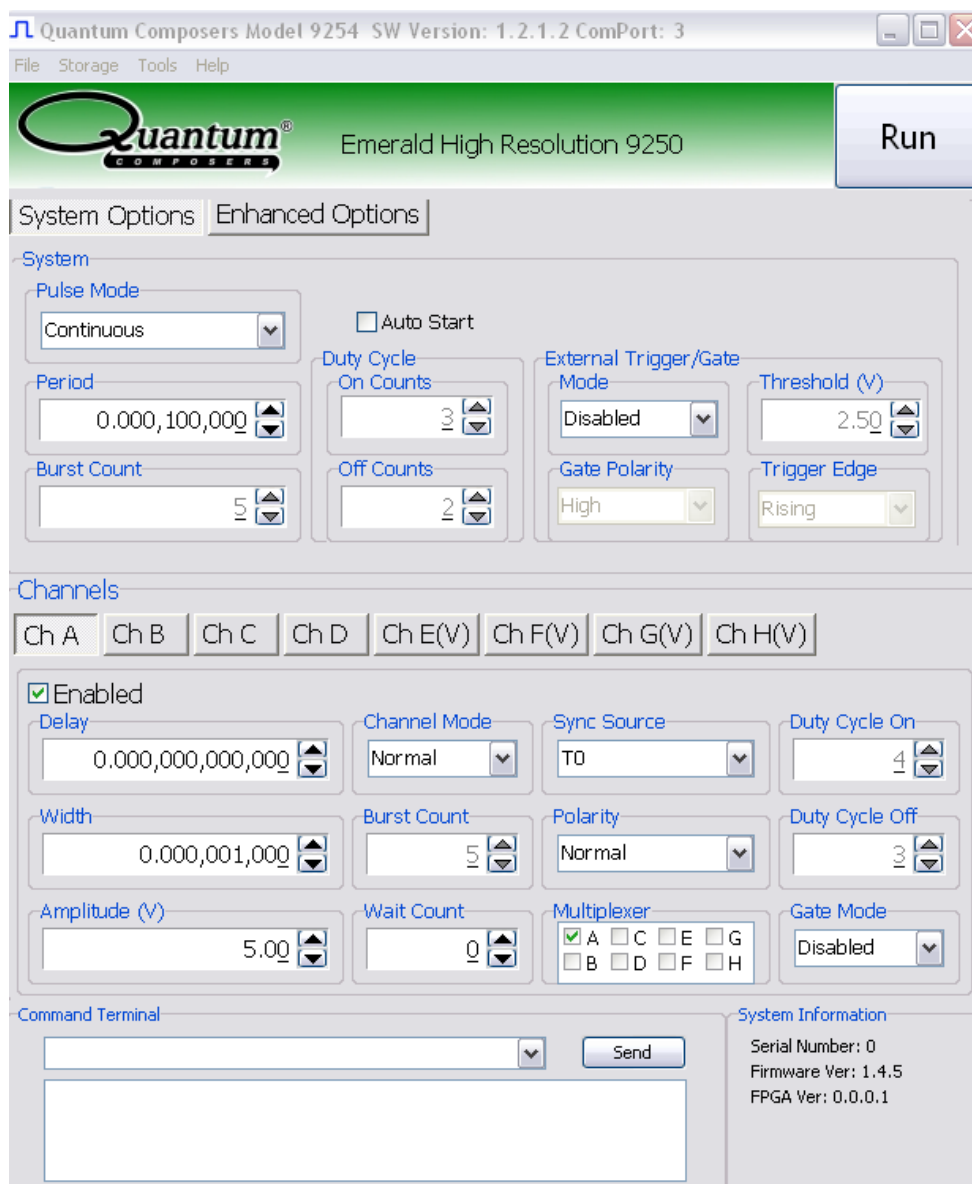


Figure 6.1 –9250 Application Shown In Default State

Basic Operation

The following steps *must* be carried out before communication with the 9250 may take place:

- Ensure that the proper drivers have already been installed on the remote computer. These drivers will need to be installed for the remote computer to interface to the 9250. Reference the “9250 Setup → USB” section for more information on installing the proper drivers.
- Open the 9250 application by double clicking on the application which can be found on the included CD.
- Once the 9250 application recognizes the COM Port the 9250 is attached to, a connection will be established, and communication may now be carried out.
- A COM Port does *not* need to be selected as the computer will automatically recognize the 9250. If multiple 9250 units are connected to the same computer, multiple instances of the GUI may be run. The first application instance will connect to the 9250 on the lowest COM Port, followed by the next application connecting to the 9250 on the next highest COM port.

*Note: Parameters on the GUI that are not applicable with the selected settings will be greyed out and won't be able to be adjusted until the appropriate settings have been selected. (Example: The System's Burst Count cannot be adjusted until the System is set to Burst Mode.)

System Section

The System Section of the 9250 application only affects the 9250's system parameters. As shown below in Figure 6.2, the following system parameters may be altered:



Figure 6.2 –9250 Application: System Parameters

- **Pulse Mode:** Changes the system's output mode to Continuous, Single Shot, Burst, or Duty Cycle.
- **Period:** Sets the System's T_0 period. Valid inputs are 40ns–4000s set in 4ns increments.
- **Duty Cycle:** If Duty Cycle has been selected in the System's Pulse Mode, the unit will generate a continuous pulse stream in which outputs will be On for "N" pulses and Off for "M" pulses. One may alter the "N" (On) and "M" (Off) parameters:
 - **On Counts ("N"):** Positive integer value which designates the number of pulses to produce during the "On Cycle." Valid inputs are 1-1,000,000.
 - **Off Counts ("M"):** Positive integer value which designates the number of pulses to suppress during the "Off Cycle." Valid inputs are 1-1,000,000.
 - **NOTE:** The number of cycles which the duty cycle sequence will execute may be altered. For more Information, see the "Enhanced Options" section.
- **Burst Count:** If Burst mode has been selected in the System's Pulse Mode, the Burst Counts positive integer input selects the number of T_0 pulses generated once the Run/Stop button has been pressed. Valid inputs are 1-1,000,000.
- **Run:** Enables or disables the output for all channels. This command is the same as pressing the Run/Stop button.
- **Auto Start:** Enables or disables the Auto Start function. If enabled, the unit will start pulsing immediately upon power-up or be in an armed state if in external mode.
- **External Trigger/Gate:** Selects the system's External Mode to be Disabled, Triggered, or Gated. If either Triggered or Gated is selected, the following sub-parameters may be set.
 - **Threshold (V):** Sets the trigger threshold Voltage in 10mV increments. Typically this value should be set to 50% of the incoming trigger voltage for optimum trigger response. Valid threshold values are 0.20V-15V. The unit can handle up to a 30V peak maximum external input.
 - **Polarity:** If the External Mode has been set to Gated, change the Polarity to the required polarity. Active low or active high are the available modes.
 - **Trigger Edge:** If the External Mode has been set to Triggered, change the Trigger Edge to the required transition. Rising or falling edge are the available modes.

Channels Section

The Channels Section of the 9250 application only affects the 9250's channel parameters. Complex pulse trains can be created by combining various system and channel modes. As shown below in Figure 6.3, the following channel parameters may be altered:

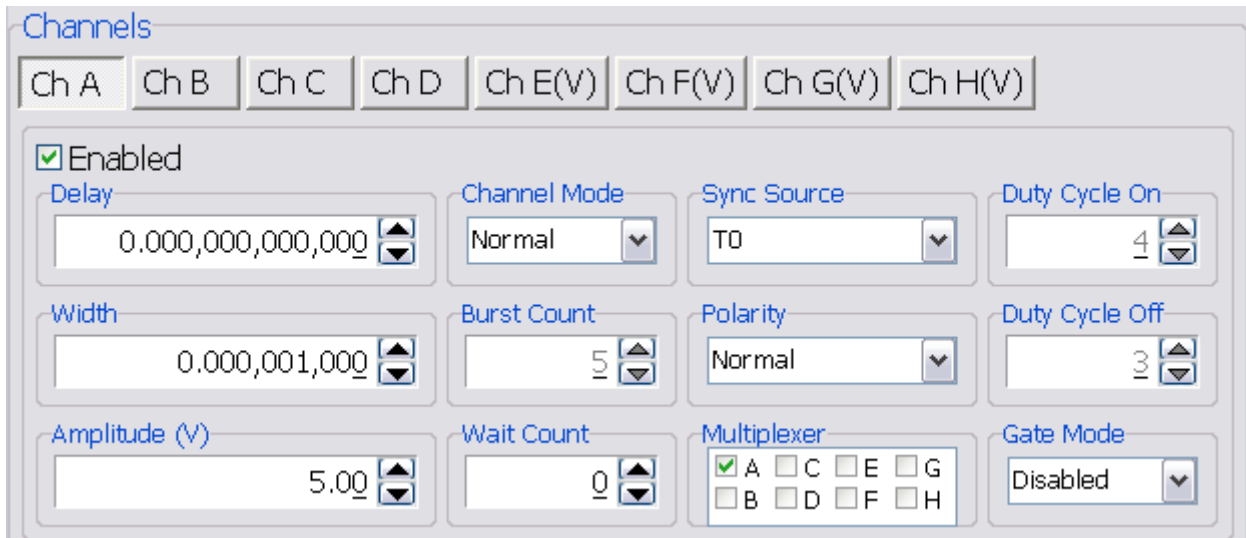


Figure 6.3 –9250 Application: Channel Parameters

- **Channel Selection:** Select the proper Channel tab in order to further edit the parameters on the corresponding channel.
- **Enabled:** Enables and Disables the output for the selected channel.
- **Delay:** Sets the delay from the timing reference to when the pulse is created. Valid input is $\pm 4000\text{s}$ with 5ps increments. Note: negative delays are only applicable if you are referenced to a channel that has a positive delay.
- **Width:** Sets the pulse width for the selected channel. Valid input is 8ns – 4000s with 4ns increments.
- **Amplitude:** Allows the user to select the voltage amplitude of the output. Valid values are 3.3V – 5V with 20mV increments.
- **Channel Mode:** Changes the Channel Mode to Normal, Single Shot, Burst, or Duty Cycle.
 - **Normal:** Channel will produce pulses as long as a T_0 is present (mimics System Pulse Mode)
 - **Duty Cycle:** If Duty Cycle has been selected in the Channels section, the unit will generate a continuous pulse stream in which outputs will be On for “N” pulses and Off for “M” pulses. One may alter the “N” (On) and “M” (Off) parameters:
 - **On Counts (“N”):** Positive integer value which designates the number of pulses to produce during the “On Cycle.” Valid inputs are 1-1,000,000.
 - **Off Counts (“M”):** Positive integer value which designates the number of pulses to suppress during the “Off Cycle.” Valid inputs are 1-1,000,000.

- **Burst Counts:** Selects the number of pulses to output with each input clock pulse. Valid input is 1-1,000,000.
- **Single Shot:** Will produce one pulse each time the channel is armed.
- **Sync Source:** Selects the timing reference for the selected channel. Each channel may be set to sync to T_0 or may be set to sync to a different channel. It should be noted that if a channel is set to sync to a separate channel a negative delay may be used as long as that delay does not require the pulse be produced before the T_0 pulse is produced. For example: the value of ($T_0 + \text{Sync source delay} + \text{channel delay}$) must be greater than or equal to 0.
- **Wait Counts:** Selects how many T_0 pulses to wait until the channel outputs its first pulse. Valid input is 0-1,000,000.
- **Polarity:** Selects the Channel's Polarity. Normal is active HIGH, Inverted is active LOW. The polarity function is not available on the virtual channels.
- **Mux:** The outputs of each of the Channel Timers are routed to a set of multiplexers. This allows routing of any or all Channel Timers to any or all of the units' outputs. In the normal mode of operation, the output of the n^{th} Channel Timer is routed to the n^{th} output connector. As an example, if a double pulse is required on Channel A, one can multiplex the Channel A timer with the Channel B timer, then adjust each timer to provide the necessary pulses. Only the timing parameters are multiplexed together, not the actual output amplitudes.
- **Gate Mode:** Selection determines which active state will gate the selected channel output.

Virtual Channels

The 4 “Virtual Channels” are used solely for multiplexing purposes (see Figure 6.4 below). The virtual channels add all the channel timer functions to each virtual channel. The interface layout and functionality is identical to a normal channel with the exception that there is no amplitude OR polarity adjustment. The other main difference is the virtual channel does not have a physical output as they are primarily used for multiplexing with the normal channels. This, in turn, allows the 9250 to multiplex all virtual channels through a normal channel output to create complex pulse trains. For example, virtual channels E through H may be multiplexed with any of the physical channels A through D.

***NOTE: The virtual channels’ delay resolution is only 4ns (as compared to the normal channels’ delay resolution of 5ps).**

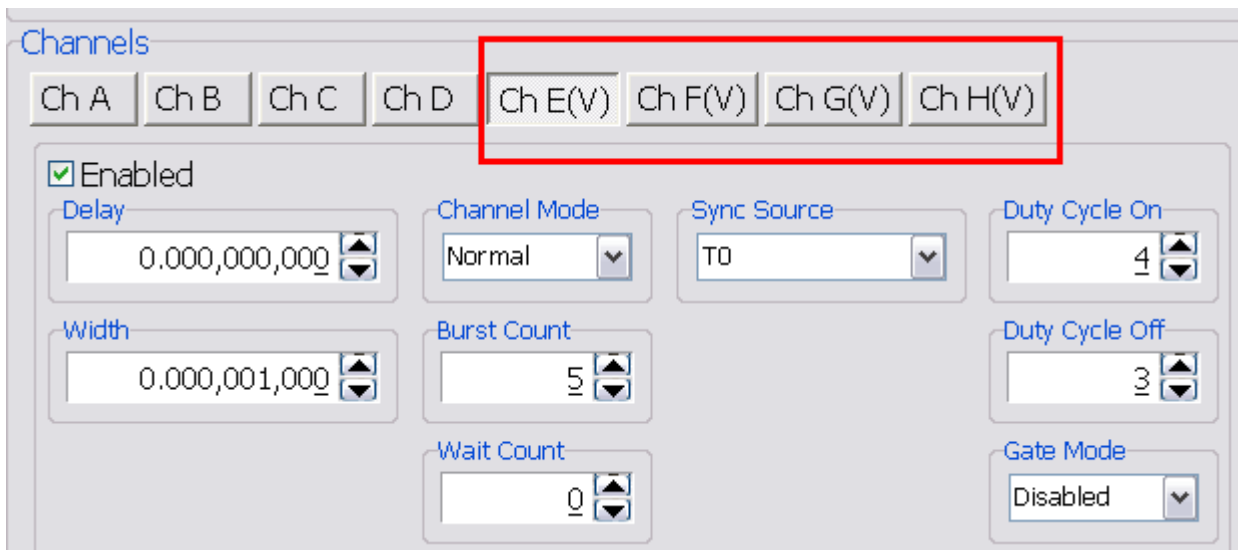


Figure 6.4 –9250 Application: System Parameters

Enhanced Options

Shown below in Figure 6.5 is the “Enhanced Options” section of the 9250 application followed by detailed descriptions of the individual functions:

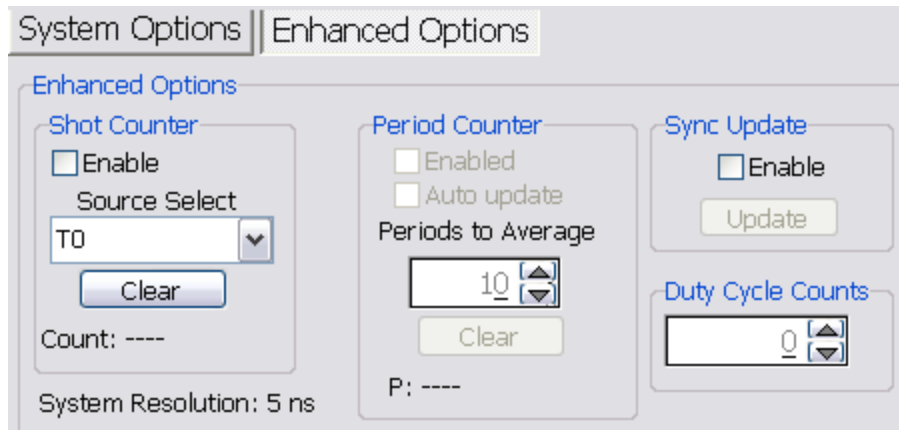


Figure 6.5 –9250 Application: System Parameters

- **Shot Counter:** The “Shot Counter” can be set up to count the system (T_0) or any of the available channel outputs. This counter is a 32 bit counter that can be enabled and reset by the user by means of the “Enable” selection and “Clear” button.
- **Period Counter:** The “Period Counter” measures the period of the incoming external trigger pulses. The period counter must be first enabled by means of the “Enable” selection. This counter can average up to 15 periods for greater accuracy. This is controlled under the “Periods to Average.” If the period counter is selected to run in manual mode (“Auto Update” *not* enabled), it will latch the incoming period measurement and hold the reading. If “Auto update” mode is selected, the reading will constantly be updated as long as external triggers are applied. The displayed measurement may be cleared at any time by means of the “Clear” button.
- **Sync Update:** The “Sync Update” allows for the channel timers (delays and widths) to be manually updated so that all changed values are applied synchronously. Normally when any width or delay is changed, it is automatically applied. When Synchronous Update Mode is selected to be enabled, all channel width and delays can be adjusted and then updated simultaneously via the “Update” button (or SCPI command).
- **Duty Cycle Counts:** The “Duty Cycle Counts” value sets the number of cycles the duty cycle sequence will execute. If set at 0, the cycles will continue until stopped by the user. Again, this feature can be thought of a “burst” for the duty cycle mode.

Command Terminal

The Command Terminal Section on the 9250 application shown below (Figure 6.6) allows the user to manually input SCPI based commands in order to alter parameters on the 9250. See “Programming the 9250” for more information on sending and formatting commands. It should also be noted that whenever a selection is made on the 9250 application, the corresponding SCPI based command will automatically be sent through the Command Terminal to the device.

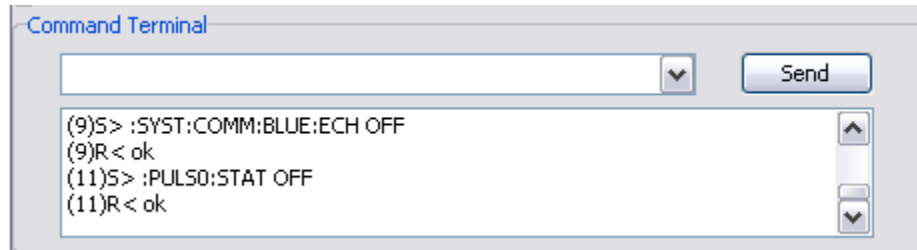


Figure 6.6 –9250 Application: Command Terminal

Parameter Storage

Saving Custom Settings to a Bin

The 9250 series has the capability to save up to 6 custom user setups. Once all the custom user settings are ready to be saved to one of six bins, click “Storage”, “Save To Bin”, followed by selecting the bin number to save the custom settings to. Figure 6.7 represents the saving process:

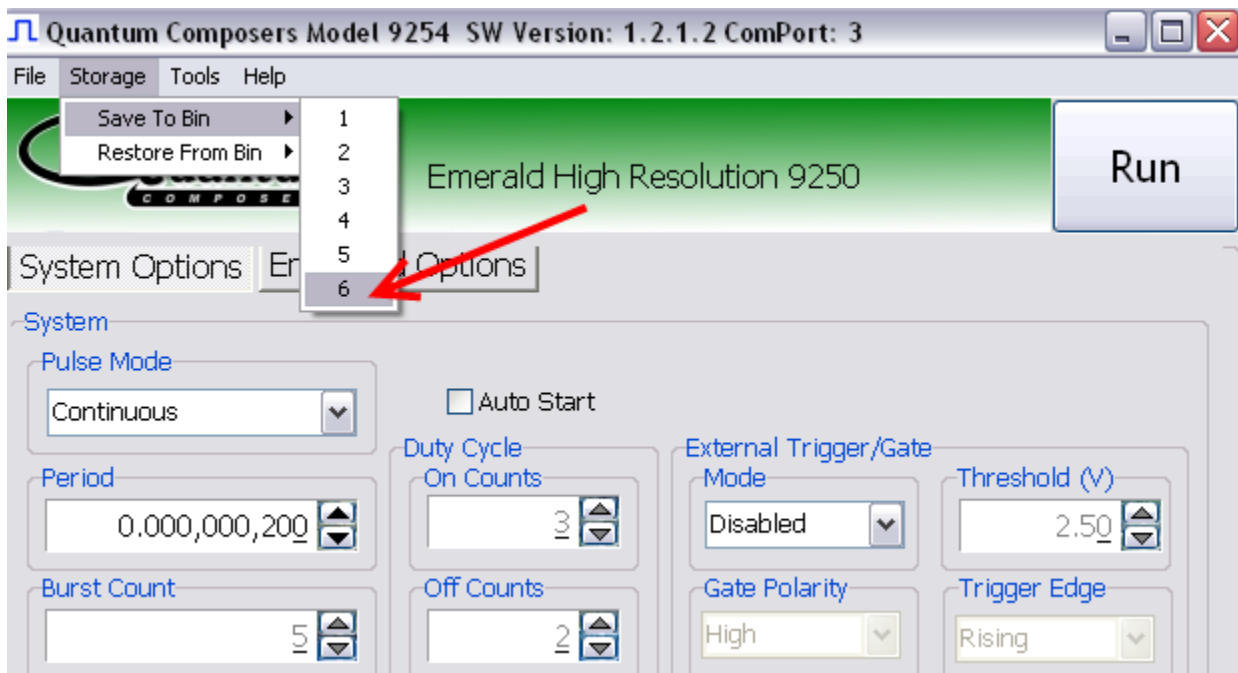


Figure 6.7 –9250 Application: Recalling From Bin

Recalling Custom Settings from a Bin

The 9250 series has the capability to recall any of the 6 custom user setups. If any of the previously saved presets are to be recalled, click “Storage”, “Restore From Bin”, followed by selecting the bin number to recall. Figure 6.8 represents the recalling process:

**Note: Selecting Default 0 will set the 9250 to factory default settings.*

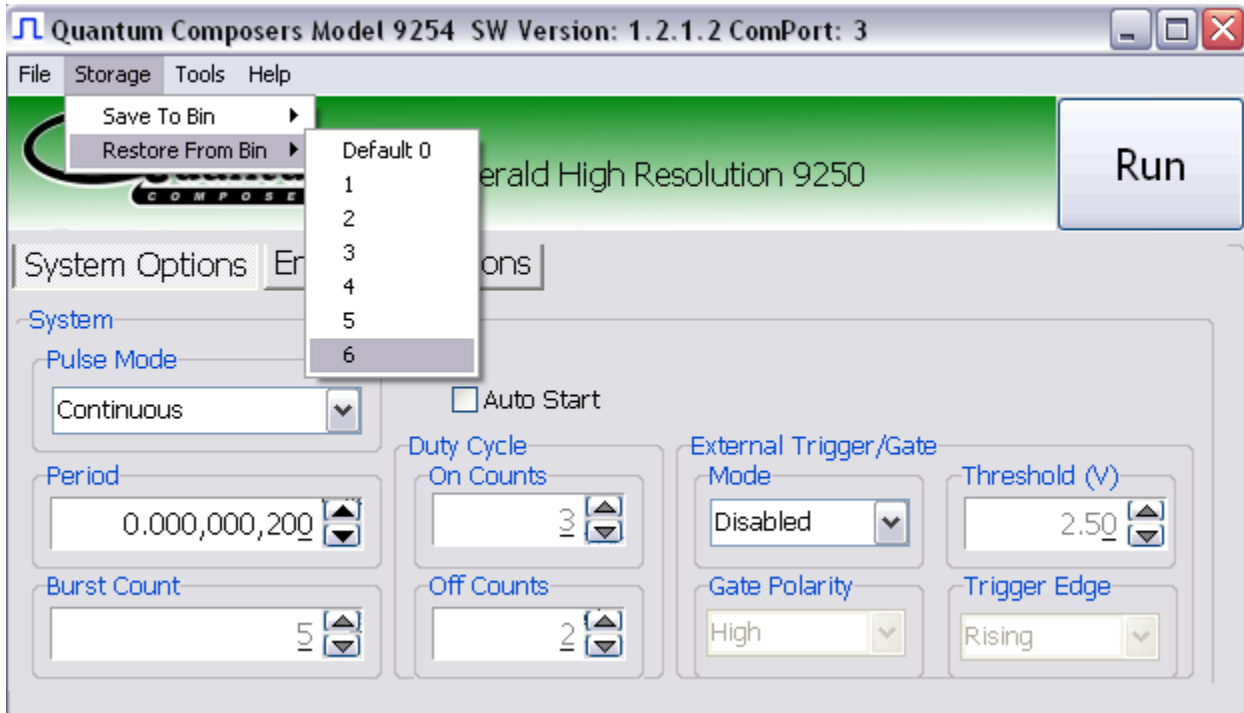


Figure 6.8 –9250 Application: Recalling From Bin

9250 Application Example

This example will demonstrate the proper 9250 application settings for a specific scenario. The example will show how to output a single pulse on Channel-A upon receiving the rising edge of every external trigger signal at 5V. The output will have an amplitude of 5V, pulse width of 10ns, and 10ps delay present. Figure 6.9 on the following page demonstrates the appropriate settings and corresponding values in which to be set.

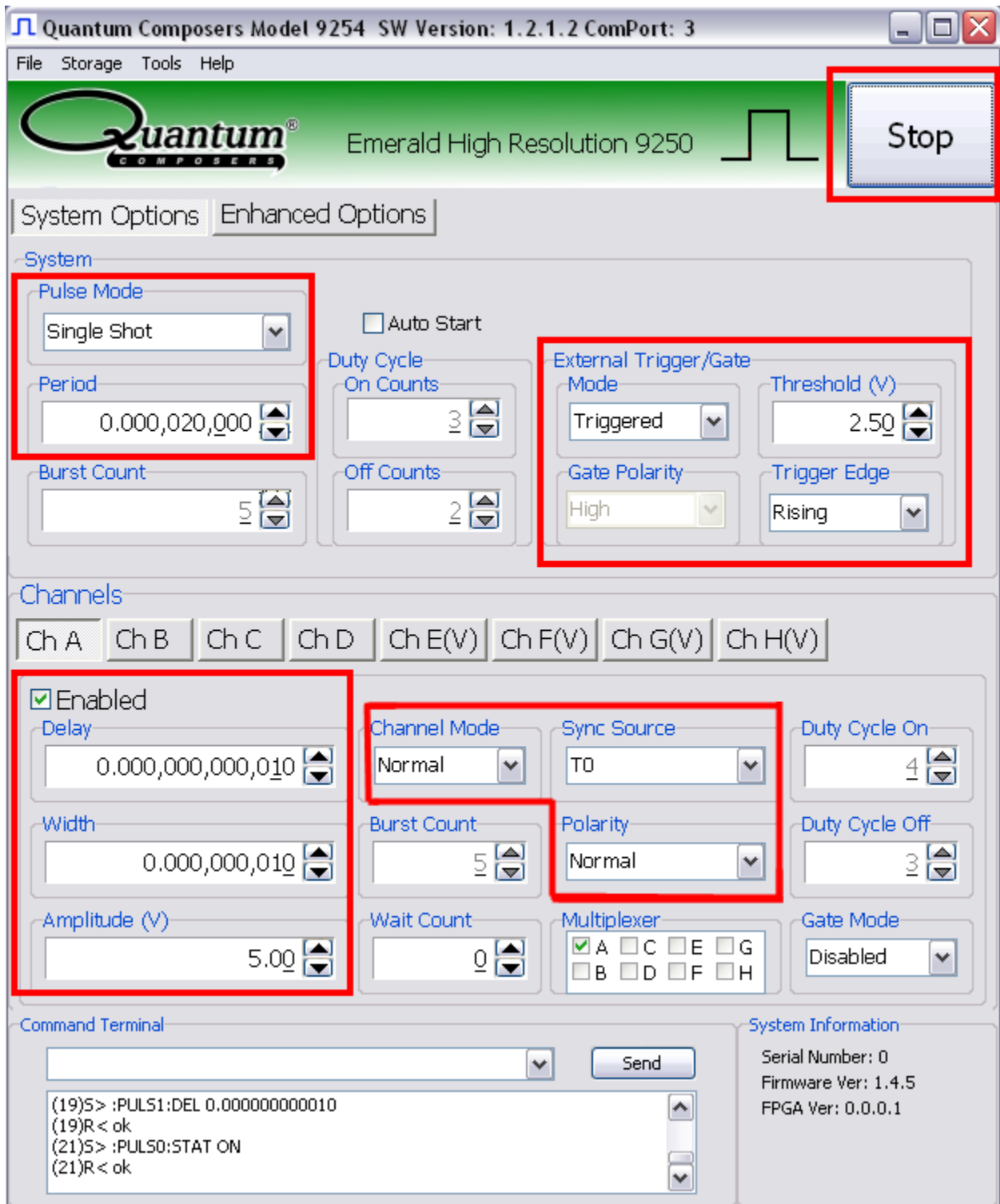


Figure 6.9 –9250 Application: Example

7. Operating the 9250

Normal Internal Rate Generator Operation

The 9250 has a complete set of functions providing a number of modes of operation for the internal or “System” rate generator (T_0). Most of these functions can be ignored if a simple continuous stream of pulses is required. Starting from the default settings, which can be restored by recalling configuration 0, the following parameters need to be set in the 9250 application:

Pulse Width, Delay	Enter the required pulse width and delay found in the Channel section. Repeat for each output channel.
T_0 Period	Set the desired pulse Period found in the System section. <i>*Note: In general the pulse delay + the pulse width + 75 ns (for a hardware reset for any channel) must be less than the T_0 period.</i>
Enable	Enable the corresponding channels by clicking “Enabled” in the Channel section.
Start	Press the unit’s Run/Stop button to <i>start</i> generating pulses
Stop	Press the unit’s Run/Stop button once again to <i>stop</i> generating pulses.

Continuous Mode

Pressing the unit’s Run/Stop button starts and stops a continuous pulse stream at the rate specified by the Period parameter. This corresponds to the default output mode for most pulse generators. To generate a continuous stream of pulses, set the following parameters in the 9250 application:

- Within the System section:
 - Select Continuous mode.
 - Set the desired pulse Period.
- Within the Channel section:
 - Enter the required pulse width and delay. Repeat for each output channel.
 - Enable the corresponding channels by clicking “Enabled” in the 9250 application.

Pressing the unit’s Run/Stop button will now generate a stream of T_0 pulses at a rate specified by the Period parameter.

Single Shot Mode

Pressing the unit's Run/Stop button generates a single pulse with every press. Set the following parameters in the 9250 application:

- Within the System section:
 - Select Single Shot mode.
- Within the Channel section:
 - Set channel mode to Normal.
 - Enter the required pulse width and delay. Repeat for each output channel.
 - Enable the corresponding channels by clicking "Enabled" in the 9250 application.

Pressing the unit's Run/Stop button will now generate one pulse out of every enabled channel.

System Burst Mode Function

The Run/Stop button generates a stream of 'N' T_0 pulses, where the 'N' is specified by the Burst parameter. The rate is specified by the Period parameter. Pressing the Run/Stop button while the burst is in process will stop the output. After the burst has been completed, Pressing the Run/Stop button will generate another burst of pulses. To generate a burst of pulses set the following parameters in the 9250 application:

- Within the System section:
 - Select mode to be Burst.
 - Set the Burst Count parameter field to produce the number of pulses desired
 - Set the desired Period.
- Within the Channel section:
 - Set channel mode to Normal.
 - Enter the required pulse width and delay. Repeat for each output channel.
 - Enable the corresponding channels by clicking "Enabled" in the 9250 application.

Pressing the unit's Run/Stop button will now generate the predefined burst of pulses out of every enabled channel.

System Duty Cycle Function

The Run/Stop button starts a continuous stream of T_0 pulses, which repeats for 'N' pulses On and 'M' pulses Off, where 'N' and 'M' are specified by the On/Off parameters respectively. The rate at which the pulses are generated is controlled by the Period parameter. To generate a stream of pulses which will repeat for 'N' pulses On and 'M' pulses, set the following parameters in the 9250 application:

- Within the System section:
 - Set the mode to Duty Cycle.
 - Set the On parameter to number of pulses to produce during the on cycle ('N').
 - Set the Off parameter to number of pulses to suppress during the off cycle ('M').
 - Set the desired Period.

- Within the Channel section:
 - Set channel mode to Normal.
 - Set the Sync Source to T_0 in each respective channel tab.
 - Enter the required pulse width and delay. Repeat for each output channel.
 - Enable the corresponding channels by clicking “Enabled” in the 9250 application.

Pressing the unit’s Run/Stop button will now generate duty cycle pulses out of every enabled channel.

Channel Timer Overview

The output of each channel is controlled by two timers to generate the pulse width and the delay timing. All channels are simultaneously triggered, depending on the system mode, by the internal T_0 pulse, the external trigger, or a trigger provided by a user. A given channel may or may not generate a pulse depending on its own channel mode as described below. The examples below assume the system is set to continuous mode.

Channel Normal Function

The Normal mode mimics the system mode once the Run/Stop button is pressed. To use channel normal mode set the following parameters in the 9250 application:

- Within the System section:
 - Set the mode to Continuous.
 - Set the desired Period.
- Within the Channel section:
 - Set the mode to Normal.
 - Enter the required pulse width and delay. Repeat for each output channel.
 - Enable the corresponding channels by clicking “Enabled” in the 9250 application.

Pressing the unit’s Run/Stop button will now generate a continuous stream of pulses. See “Output Examples” for a visual representation.

Channel Single Shot Function

The Single Shot mode generates a single pulse every time the unit is placed into active mode. To use the channels’ single shot mode set the following parameters in the 9250 application:

- Within the System section:
 - Set the mode to Continuous.
 - Set the desired Period (regulates rate of single shots)
- Within the Channel section:
 - Set the mode to Single Shot.
 - Enter the required pulse width and delay. Repeat for each output channel.
 - Enable the corresponding channels by clicking “Enabled” in the 9250 application.

Pressing the unit's Run/Stop button will place the unit into active mode and generate a single pulse on the enabled channels. Pressing the unit's Run/Stop button again will take the unit out of the active state (which will *not* produce a pulse). Continue this process for additional single pulses. See "Output Examples" for a visual representation.

Channel Burst Mode

The burst mode generates a burst of pulses every time the unit is placed into active mode. To use the channels' burst mode set the following parameters in the 9250 application:

- Within the System section:
 - Set the mode to Continuous.
 - Set the desired Period.
- Within the Channel section:
 - Set the mode to Burst.
 - Set the Burst parameter to the number of pulses to produce during the on cycle ('N').
 - Enter the required pulse width and delay. Repeat for each output channel.
 - Enable the corresponding channels by clicking "Enabled" in the 9250 application.

Pressing the unit's Run/Stop button will place the unit into active mode and generate a burst of pulses on the enabled channels. Pressing the unit's Run/Stop button again will take the unit out of the active state (which will *not* produce a burst). Continue this process for additional bursts. See "Output Examples" for a visual representation.

Channel Duty Cycle Mode

The channel duty cycle mode will generate a stream of pulses on the channel level which will repeat on for 'N' pulses and off or 'M' pulses. To generate the stated sequence of pulses set the following parameters in the 9250 application:

- Within the System section:
 - Set the mode to Continuous.
 - Set the desired Period.
- Within the Channel section:
 - Set the On parameter to the number of pulses to produce during the on cycle ('N').
 - Set the Off parameter to the number of pulses to suppress during the off cycle ('M').
 - Enter the required pulse width and delay. Repeat for each output channel.
 - Enable the corresponding channels by clicking "Enabled" in the 9250 application.

Pressing the unit's Run/Stop button will place the unit into active mode and generate a pulse train based on the duty cycle settings. Pressing the unit's Run/Stop button again will take the unit out of the active state (which will *not* produce pulses). Continue this process for additional duty cycle pulse trains. See "Output Examples" for a visual representation.

**Note: If a divide-by-'N' function is desired, the duty cycle mode can be used. The duty cycle mode is a more general case of this operation. To reproduce the divide-by-'N' function set the on cycle to 1 and set the off cycle to 'N'-1, where 'N' is the divide by factor.*

External Input Overview

The external Trigger/Gate input may be used to trigger the unit or gate the system/channel timers. When used in trigger mode, the external input acts as a system start pulse. Conversely, when used in gate mode, the external input acts in a pulse inhibiting fashion.

When the 9250 is in external trigger mode, a single pulse, burst of pulses, or duty cycle response of pulses may be produced on each active channel for each external input trigger.

Generate a Pulse on Every Trigger Input

To generate a *single* pulse on every trigger input set the following parameters in the 9250 application:

- Within the System section:
 - Set the mode to Single Shot mode.
 - Set the desired Period.
 - Select the Triggered mode.
 - Set the trigger threshold level to ~50% of the incoming signal.
 - Select which edge (i.e. rising or falling) to trigger on.
- Within the Channel section:
 - Set the mode to Normal.
 - Enter the required pulse width and delay. Repeat for each output channel.
 - Enable the corresponding channels by clicking "Enabled" in the 9250 application.

Pressing the unit's Run/Stop button will arm the unit. Once the unit is armed, it will generate a T_0 pulse for every external trigger received. Pressing the unit's Run/Stop button or clicking the 9250 application's Run/Stop again will disarm the unit. This mode corresponds to the normal external mode found on most other pulse generators. See "Output Examples" for a visual representation.

Using the External Gate to Control the System

The external input configured in System Gate mode may be used to control the output of the unit. To gate the internal system timer with an external source set the following parameters on the 9250 application:

- Within the System section:
 - Set the desired System mode.
 - Set the desired Period.
 - Chose *Gated mode.
 - Choose the proper *Gated polarity (High/ Low).
 - Set the threshold level to ~50% of the incoming gate signal.
- Within the Channels section:
 - Enter the required pulse width and delay. Repeat for each output channel.
 - Set the desired Channel Mode.

Using the External Gate to Control the Channel

The external input configured in Channel Gate mode may also be used to control the output of the unit. To gate the channel timers with an external source set the following parameters on the 9250 application:

- Within the System section:
 - Set the desired System mode.
 - Set the desired Period.
 - Set the threshold level to ~50% of the incoming gate signal.
- Within the Channels section:
 - Enter the required pulse width and delay. Repeat for each output channel.
 - Set the desired channel mode.
 - Set the proper **Gate Mode (Active High/Active Low)

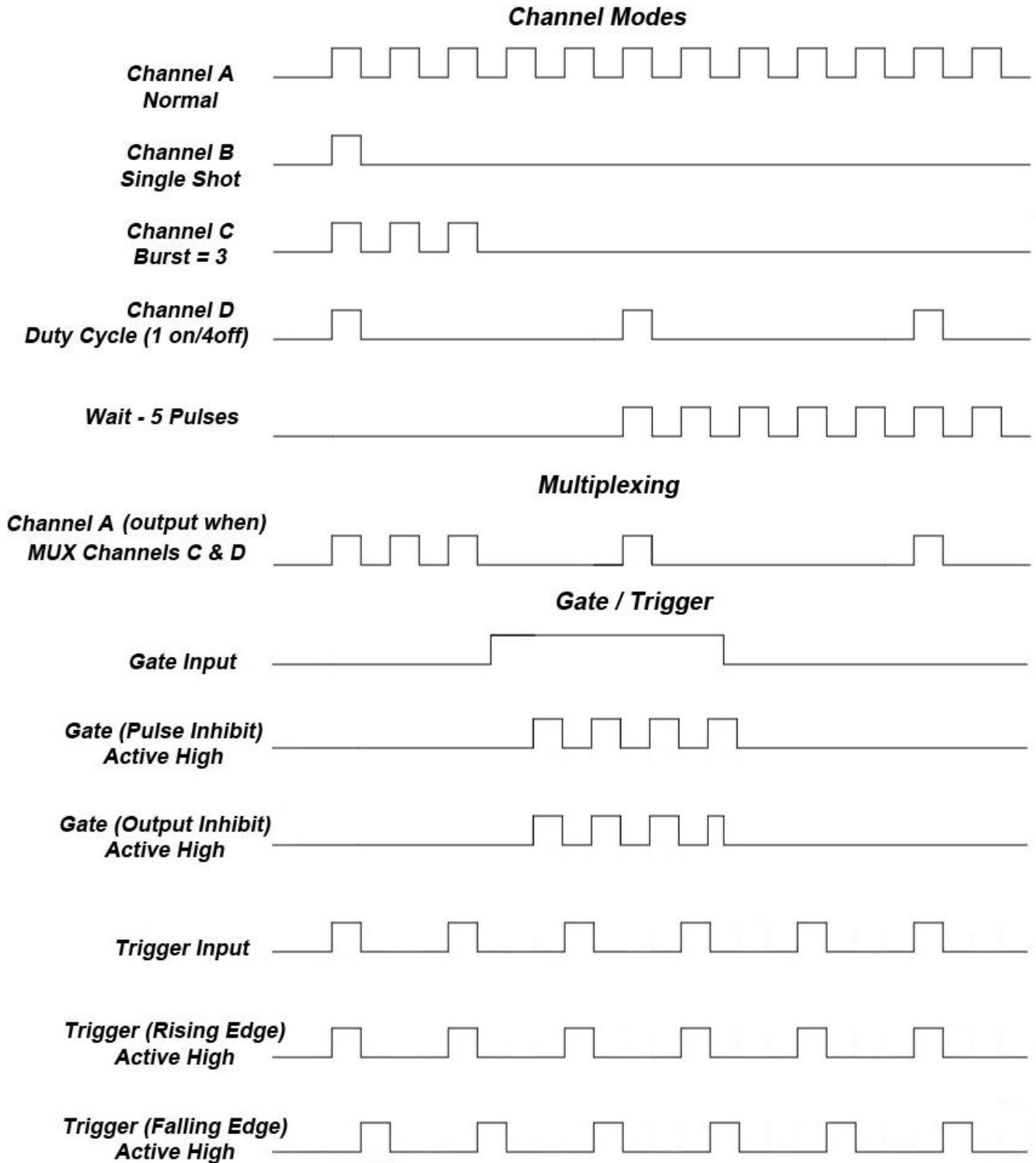
** System gated mode (Pulse Inhibit mode) prevents the channel from being triggered by the channels' trigger source. When in Pulse Inhibit mode, if a pulse has already started when the gate is active, the channel pulse will continue normal output; although, the output will not restart on the next trigger pulse until the gate signal is asserted again. See "Output Examples" for a visual representation.*

*** Channel gated mode (Output Inhibit mode) leaves the base triggering alone and enables/disables the output directly (i.e. the output will cease immediately upon the disabling of the external gate signal). See "Output Examples" for a visual representation.*

Pressing the unit's Run/Stop will arm the unit. Once the unit is armed, it will begin generating pulses whenever the external trigger input is in the active state. When the gate is in the active state, the system timer is reset. Pressing the unit's Run/Stop button again will disarm the unit. See "Output Examples" for a visual representation.

Output Examples

The following figure presents a graphical representation of the channel modes as well as the external trigger/gate functionality. It should be noted that following figure represents *examples only* as many parameters in each pulse train below have the potential to be modified.



8. Programming the 9250

Personal Computer to 9250 Communication

The 9250 uses USB as the standard interface. Bluetooth is also available as an additional interface. All settings can be set and retrieved over either interface using a simple command language or with the included 9250 application. The command set is structured to be consistent with the Standard Commands for Programmable Instruments (SCPI). Although due to the high number of special features found in the 9250, many of the commands are not included in the specification. The syntax is the same for all interfaces. The average amount of time required to receive, process, and respond to a command at a baud rate of 115200 is 10ms. Sending commands faster than 10ms may cause the unit to not respond properly. It is advised to wait until a response from the previous command is received before sending the next command.

USB Interface Overview

The USB interface is standard on the 9250. Once the proper drivers have been installed, the 9250 will show up in the device manager as a USB to Serial Port Adapter. The 9250 can then be communicated with by either the included 9250 application or by using any generic communication terminal program.

USB communication notes:

- The correct drivers must be installed on the personal computer before communication can be accomplished via USB.
- The unit is baud rate independent, so any speed can be selected. Typically a rate of 115,200bps can be used.
- It is recommended that USB 2.0 (or greater) specification is used.
 - The USB cable can be removed without “ejecting” the device in the operating system environment.

Programming Command Types and Format

The 9250 Pulse Generator uses two types of programming commands: IEEE 488.2 Common Commands and Standard Commands for Programmable Instruments (SCPI). The format is the same for all interfaces. The included 9250 application, HyperTerminal (in Windows), or any other generic terminal program may be used to interactively test the commands using the USB (or optional Bluetooth) interface. The format of each type is described in the following paragraphs.

Line Termination

The pulse generator uses text-style line terminations. When a command is sent to the unit, the firmware is programmed to read characters from a communication port until it reads the line termination sequence.

The command string is parsed and executed after reading these characters. These characters are the “carriage return” and “linefeed”. They are ASCII character set values 13 and 10 respectively (hex 0x0D and 0x0A). All command strings need to have these characters appended.

When the pulse generator responds to a command, whether it is a query or a parameter change, it also appends its return strings with these characters. Coded applications could use this behavior to know when to stop reading from the unit. However, if the “echo” parameter is enabled, there will be two sets of line terminators, one following the echoed command string, and one following the pulse generator’s response.

The pulse generator responds to every communication string. If the communication string is a query, the unit responds with the queried response (or error code) followed by the line terminators. If the communication string is a parameter change, the response is “ok” (or error code) followed by the line terminators. For this reason, it is not recommended that multiple commands be stacked together into single strings as is common with some other types of instruments. It is recommended that the coded application send a single command in a string and follow immediately by reading the response from the unit. Repeat this sequence for multiple commands.

IEEE 488.2 Common Command Format

The IEEE 488.2 Common Commands control and manage generic system functions such as reset, configuration storage and identification. Common commands always begin with the asterisk (*) character and may include parameters. The parameters are separated from the command mnemonic by a space character. For Example:

```
*RST <cr><lf>  
*RCL 1 <cr><lf>  
*IDN? <cr><lf>
```

SCPI Command Keywords

The commands are shown as a mixture of upper and lower case letters. The upper case letters indicate the abbreviated spelling for the command. You may send either the abbreviated version or the entire keyword. Upper and/or lower case characters are acceptable.

For example, if the command keyword is given as POLarity, then POL and POLARITY are both acceptable forms; truncated forms such as POLAR will generate an error; polarity, pol, and PolAriTy are all acceptable as the pulse generator is not case sensitive.

**Note: The unit by default is not case sensitive.*

SCPI Command Format

SCPI commands control and set instrument specific functions such as setting the pulse width, delay, and period. SCPI commands have a hierarchical structure composed of functional elements that include a header or keywords separated with a colon, data parameters, and terminators. For example:

SCPI Format

```
:PULSE1:STATE ON <cr> <lf>
:PULSe1:WIDTh 0.000120 <cr>
<lf>
:PULSe:POL NORMAl <cr> <lf>
```

Any parameter may be queried by sending the command with a question mark appended. For example:

SCPI Query Format

```
:PULSE1:STATE? <cr><lf>
    Will return          1<cr><lf>
:PULSE1:WIDTh? <cr><lf>
    Will return          0.000120000 <cr><lf>
:PULSE1:POL? <cr><lf>
    Will return          NORM <cr><lf>
```

SCPI Keyword Separator

A colon (:) must always separate one keyword from the next lower-level keyword. A space must be used to separate the keyword header from the first parameter.

SCPI Optional Keywords

Optional keywords and/or parameters appear in square brackets ([]) in the command syntax. Note that the brackets are not part of the command and should not be sent to the pulse generator. When sending a second level key word without the optional keyword, the pulse generator assumes that you intend to use the optional keyword and responds as if it had been sent.

SCPI Specific and Implied Channel

Some commands, such as PULSe, allow specifying a channel with an optional numeric keyword suffix. The suffix will be shown in square brackets [1 / 2]. The brackets are not part of command and are not to be sent to the pulse generator. The numeric parameters correspond to the following channels: 0 = T₀, 1 = ChA, 2 = ChB, etc. Only one channel may be specified at a time.

If you do not specify the channel number, the implied channel is specified by the :INSTrument:SELEct command or the last referenced channel.

After power-up or reset (*RST) the instrument will default to channel #1.

SCPI Parameter Types

The following parameter types are used:

<Numeric Value>	Accepts all commonly used decimal representation of numbers including optional signs, decimal points, and scientific notation: For Example: 123, 123e2, -123, -1.23e2, .123, 1.23e-2, 1.2300E-01
<Boolean Value>	Represents a single binary condition that is either true or false. True is represented by a 1 or ON; false is represented by a 0 or OFF. Queries return 1 or 0.
<Identifier>	Selects from a finite number of predefined strings.

Error Codes

The unit responds to all commands with either:

ok <cr><lf> or ?'n '<cr><lf>

Where 'n' is one of the following error codes:

1. Incorrect prefix, i.e. no colon or * to start command.
2. Missing command keyword.
3. Invalid command keyword.
4. Missing parameter.
5. Invalid parameter.
6. Query only, command needs a question mark.
7. Invalid query, command does not have a query form.
8. Command unavailable in current system state.

Programming Examples

Example 1)

20 ms pulse width, 2.3 ms delay, 10 Hz internal trigger, and continuous operation.

:PULSE1:STATE ON <cr> <lf>	enables channel A
:PULSE1:POL NORM <cr> <lf>	sets polarity to active high
:PULSE:WIDT 0.020 <cr> <lf>	sets pulse width to 20 ms
:PULSE1:DELAY 0.0023 <cr> <lf>	sets delay to 2.3 ms
:PULSE0:MODE NORM <cr> <lf>	sets system mode to continuous
:PULSE0:PER 0.1 <cr> <lf>	sets period to 100 ms (10 Hz)
:PULSE0:EXT:MODE DIS <cr> <lf>	disables the external trigger

To start the pulses use either of the following commands:

:PULSE0:STATE ON <cr> <lf>	starts the pulses
:INST:STATE ON <cr> <lf>	alternate form to start pulses

Example 2)

25 μ s pulse width, 0 delay, external trigger, and one pulse for every trigger.

:PULSE1:STATE ON <cr> <lf>	enables channel A
:PULSE1:POL NORM <cr> <lf>	sets polarity to active high
:PULSE:WIDT 0.000025 <cr> <lf>	sets pulse width to 25 μ s
:PULSE1:DELAY 0 <cr> <lf>	sets delay to 0
:PULSE0:MODE SING <cr> <lf>	sets system mode to single shot
:PULSE:EXT:MODE TRIG <cr> <lf>	sets system to external trigger
:PULS:EXT:LEV 2.5 <cr> <lf>	sets trigger level to 2.5 volts
:PULS:EXT:EDGE RIS <cr> <lf>	set to trigger on rising edge

To arm the instrument in external gate mode, use either of the following commands:

:PULSE0:STATE ON <cr> <lf>	Arms the instrument
:INST:STATE ON <cr> <lf>	Alternate form if T ₀ is currently selected.

A software generated external trigger can be generated by using the following command:

*TRG <cr> <lf>	Generates a software external trigger
----------------	---------------------------------------

9250 SCPI Command Summary

Command	Keyword 1	Keyword 2	Keyword 3	Parameter Range	Notes
:INSTRument					The units' upper level command keyword.
	:CATalog			?	Returns a comma separated list of the names of all channels. Example: A two channel unit would return T ₀ , CHA, CHB
	:FULL			?	Returns a comma-separated list of the names of all the channels and their associated number. Example: a two channel unit would return T ₀ , 0, CHA, 1, CHB, 2
	:COMMands			?	Returns an indentured list of all valid SCPI commands
	:NSElect			0 – 4	Selects a channel using the numeric value
	:SElect			T ₀ / CH[A-D]	Selects a channel using the identifier
	:STATe			0/1 or OFF/ON	Enables/Disables the selected channel output. If no channel has been selected the command is applied to T ₀ . If T ₀ is selected all outputs are affected. Enabling T ₀ is the same as pressing the RUN button.

Command	Keyword 1	Keyword 2	Keyword 3	Parameter Range	Notes
:PULSe[0]					Command to change the units' global settings, this is the same as using the :SPULSe command
	:COUNter				Subsystem. Contains commands to define the Counter function.
		:STATe		0/1 or OFF/ON	Enables/Disables the counter function
		:SOURce		T ₀ / CH[A-D]	Counter source. Default is T ₀ .
		:CLear			Clears the active counter.
		:COUNt		?	Reports the clock pulses output; although in single shot mode, the trigger pulses input on the channel will be displayed.
	:STATe			0/1 or OFF/ON	Enables/Disables the output for all channels. This command is the same as pressing the Run/Stop button.

	:PERiod			40[ns] – 4000[s]	Sets the T_0 period. The command should be sent without units. If for example 200ns is desired the parameter sent should be 200e-9, or the decimal equivalent.
	:MODE			NORMal/SINGle/ BURSt/DCYClE	Changes the system output mode.
	:BCOunter			1-1,000,000	Changes the number of pulses to output when the system is in burst mode. <i>*Note: The commas should be omitted.</i>
	:PCOunter			1-1,000,000	Changes the number of on pulses to output when the system is in Duty Cycle mode. <i>*Note: The commas should be omitted.</i>
	:OCOunter			1-1,000,000	Changes the number of off pulses to suppress when the system is in Duty Cycle mode. <i>*Note: The commas should be omitted.</i>
	:CCOunter			0-1,000,000	Cycle counter. Sets the number of system cycles to repeat when in duty cycle mode. Setting to zero disables any cycle counts.
	:EXTernal				Submenu for selecting the trigger input
		:MODE		DISabled / TRIGger / GATE	Selects the trigger mode*
		:LEVel		0.2 - 15[V]	Choose the gate level threshold to trigger on which should be set to ~ 50% of the input voltage.
		:EDGE		RISing / FALLing	Selects which edge (rising or falling) to use as the trigger signal
		:POLarity		LOW / HIGH	Sets the polarity of the gate signal. HIGH output is active when the gate signal is high; LOW output is active when the gate signal is low.
	:EXTPeriod				External trigger period.
		:STATe		0/1 or OFF/ON	Enables/Disables the counter function.
		:AUTo		0/1 or OFF/ON	Sets auto update mode. Auto will continually update the value, overwriting the previous value.
		:CLear			Clears the active counter.

		:NCOUnts		1-15	Number of periods to average.
		:COUNT?			Reports the number of clock counts between input pulses.
		:PERiod?			Returns the period value taking into consideration the number of averaging counts and system resolution. Value is in seconds.
		:ACTive?			Reports if actively counting period. State will be zero if not actively counting the period.

* It should be noted that when the 9250 is in external trigger mode, it may be configured to output a single pulse, burst of pulses, or duty cycle response of pulses upon each external input.

Command	Keyword 1	Keyword 2	Keyword 3	Parameter Range	Notes
:PULSe[1/2/n]					Command to change the units' channel specific settings.
	:STATe			0/1 or OFF/ON	Enables/Disables output pulse for selected channel.
	:WIDTh			8[ns] – 4000[s]	Sets the pulse width for the selected channel. The command should be sent without units. If for example 8ns is desired the parameter sent should be 8e-9, or the decimal equivalent.
	:DELay			+/-4000[s]	Sets the delay from the timing reference to when the pulse is created. The command should be sent without units. If for example 50ns is desired the parameter sent should be 50e-9, or the decimal equivalent.
	:SYNC			T ₀ ,CHA,CHB,CHC,CHD	Allows the user to select the timing reference for each channel. <i>*Note: Cannot set a channel to be synced to itself</i>
	:MUX			0-15	Decimal representation of a 4 bit binary number (example: 15 = 1111)
	:POLarity			NORMal / COMPLEMENT / INVERTed	Normal is active HIGH, Inverted and Complement are active LOW.
	:OUTPut				Command to change the channels' output parameters.
		:AMPLitude		3.3 - 5 [V]	Allows the user to select adjustable TTL/CMOS output voltages.

	:CMODE			NORMAL / SINGLE / BURSt / DCYCLE	Allows the user to select the pattern of outputs to use on the channel level.
	:BCOUNTER			1 to 1,000,000	When the channel is in Burst mode will allow user to select the number of pulses to output with each input clock pulse. <i>*Note: The commas should be omitted.</i>
	:PCOUNTER			1 to 1,000,000	When the channel is in duty cycle mode will allow the user to select the number of pulses to create with each input clock pulse. <i>*Note: The commas should be omitted.</i>
	:OCOUNTER			1 to 1,000,000	When the channel is in duty cycle mode will allow the user to select the number of pulses to suppress with each input clock pulse. <i>*Note: The commas should be omitted.</i>
	:WCOUNTER			0 to 1,000,000	Allows user to select how many clock cycles to wait until the channel should start creating an output pulse. <i>*Note: commas should be omitted.</i>
	:CGATE			DIS / LOW / HIGH	Channel Gate Subsystem. Contains commands to control using the gate input to control the output channel.

Command	Keyword 1	Keyword 2	Keyword 3	Parameter Range	Notes
:SYSTEM					Command to change the units' system settings.
	:STATE			?	Query Only Command
	:BEEPER				Command to change the units' beeper settings.
		:STATE		0/1 or OFF/ON	Command to turn on or off the systems' beeper.
	:COMMUNICATE				Command to set the communication settings.
		:USB			
			:ECHO	0/1 or OFF/ON	Command to Enable/Disable the echo function on the RS-232 interface. The Echo function will cause the unit to repeat the command received to the PC.
		:BLUETOOTH			

			:ENable	0/1 or OFF/ON	Turns on/off Bluetooth module. Disables Bluetooth transmitter. This state is not saved and will default to on when power is cycled. <i>*Note: Command not available on units without Bluetooth option.</i>
			:ECHO	0/1 or OFF/ON	Command to enable/disable the echo function on the Bluetooth interface. The Echo function will cause the unit to repeat the command received to the PC. <i>*Note: Command not available on units without Bluetooth option.</i>
			:MAC	?	Returns the Bluetooth MAC address.
	:AUTorun			0/1 or OFF/ON	When the unit is powered up, if this command is enabled, the unit will start pulsing automatically.
	:VERSion			?	Query only. Returns SCPI version number in the form YYYY.V for ex. 1999.0

IEEE 488.2 Common Commands

Command:	Parameter Range:	Notes:
*IDN	?	Query only. Returns model, serial number, firmware version, and FPGA version numbers.
*RCL	0 - 6	Recalls configuration from specified storage location
*RST		RESET. Resets parameters, same as *RCL 0
*SAV	1 - 6	Saves current parameters to desired storage location
*SER	?	Serial number query.
*TRG		Creates a soft trigger input.
*ARM		Resets all channel counters simultaneously when the channels are in either single shot or burst mode. <i>*Note: The system must be in continuous mode (this command is functionally the same as pressing the Run/Stop button).</i>

9. Appendix A – Specifications

9250 Specifications

- Indoor use in dry conditions only
- Ordinary Protection: This product is NOT protected against harmful ingress of moisture.
- Class III Equipment (external 5VDC power source)
- External Power Supply: Class II (ground connection not required for safety)
 - Mains Supply Input: 100-240V ~ 50-60Hz 0.3A
 - Output: 5VDC 2A
- Pollution Degree II (Micro-Ambient Pollution restricted to temporary conductivity caused by condensation).
- External Power Supply: Installation (Overvoltage) Category II for transient over-voltages.
- Maximum Relative Humidity: 0-80% relative humidity, non-condensing
- Maximum altitude: 0 to 2000m (6562 ft.)
- Accessories: USB cable & 5V (10W) DC Power Supply
- Cleaning Instructions: Light dusting with cloth damp with water and/or usage of compressed air is all that is needed.

9250 Specifications	MIN	TYP	MAX	UNIT
I/O Configuration				
Model/Output	9254 – 4 Independent + 4 Virtual Channels (Mux)			
Input	1 Selectable Trigger/Gate Input			
Internal Rate Generator				
Rate (T ₀ Period)	0.00025	-	25,000,000	Hz
Resolution	-	4	-	ns
Accuracy	4ns + (0.0001 x Period)			
T ₀ Period Jitter	-	-	40	ps(RMS)
Time Base	250MHz, Low Jitter PLL			
Oscillator	25MHz, 280ppb Crystal Oscillator			
System Modes	Single, Continuous, Burst, Duty Cycle			
Burst Mode	1	-	1,000,000	Pulses
Duty Cycle Mode	1	-	1,000,000	Pulses
Pulse Control Modes	Internal Rate Generator, External Trigger/Gate			

Channel Timing Generator				
Pulse Width Range	8n	-	4,000	s
Width Accuracy ⁽¹⁾	10ns + [0.0001 x (width + delay)]			
Width Resolution	-	4	-	ns
Pulse Delay Range	+/- 4,000			s
Delay Accuracy ⁽²⁾	1ns + (0.0001 x delay)			
Delay Resolution	-	5	-	ps
Jitter (Channel to Channel)	15ps + (.00000001 x delay) RMS			
Multiplexer	Any/all channels may be OR'd to any/all outputs			
Time Base	Same as internal rate generator			
Channel Modes	Single Shot, Normal, Burst, Duty Cycle			
Burst Mode	1	-	1,000,000	Pulses
Duty Cycle Mode	1	-	1,000,000	Pulses
Wait Function	0	-	1,000,000	Pulses
Control Modes	Internally triggered or externally gated. Each channel may be independently set to either mode.			
System External Trigger/Gate Input				
Trigger Input Function	System will generate a T ₀ pulse for every external trigger pulse. See "External Input Overview" for more information.			
Trigger Edge	Rising / Falling			
Gate Input Function	External gate input controls the output of the unit			
Gate Input Modes	System Gate (Pulse Inhibit) Channel Gate (Output Inhibit) See External Trigger/Gate section for more information			
Gate Polarity	Active High / Active Low			
Trigger/Gate Input Module				
Threshold	0.2	-	15	V
Max Input Voltage	-	-	30	V
Resolution	-	10	-	mV
Trigger Accuracy	±3% of Threshold Voltage			
Impedance	5.3K ohm + 40pF			
Trigger Rate	DC	-	20	MHz
Trigger Input Jitter	-	-	4	ns(RMS)
Trigger Input Insertion Delay	-	-	75	ns
Trigger Input Minimum Pulse Width	20	-	-	ns
Pulse Inhibit Delay	-	-	150	ns
Output Inhibit Delay	-	-	100	ns
External Period Counter Rate	DC	-	20	MHz
External Period Counter Resolution	-	4	-	ns

Output Module				
Output Impedance	-	50	-	Ohms
Output Level	3.3 – 5.0 VDC into ≥ 1K ohm 1.7 – 2.5 VDC into 50 ohm			
Resolution	-	20	-	mV
Output Current	5mA typical into 1K ohm 50mA typical into 50 ohm			
Rise Time (10% - 90%)	< 2ns typical @ 5V (High Imp) < 1ns typical @ 2.5V (50 ohm)			
Slew Rate	2	-	-	V/ns
Overshoot	< 100mV + 10% of pulse amplitude			
Communications				
USB	Standard – USB 2.0			
BlueTooth	Optional			
Class	Class II Radio			
Output Transmitter Gain	-	4	-	dBm
Transmitter Sensitivity	-	-80	-	dBm
Transmitting Range	-	20	-	Meters
Baud Rate	-	115200	-	bps
General				
Dimensions	7.125" x 5.1" x 1.5" (18.1 x 13 x 3.8 cm)			
Weight	-	1	-	lbs
Power				
Voltage Input	4.75	-	5.25	VDC
Current Input	800	830 ⁽³⁾	1,500 ⁽⁴⁾	mA
Fuse	Internal current sense circuit incorporated. No external fuse is provided.			
Memory	-	6	-	Bins
Operation Temperature	0	-	40	Celsius
Storage Temperature	-40	-	70	Celsius

⁽¹⁾ The highest error in accuracy occurs when all channel delays are set to zero. Delay adjustments may be used to lower the error accordingly.

⁽²⁾ The delay (rising edge) has the 5ps resolution while the width (falling edge) only has 4 ns resolution; thus, when dynamically adjusting the delay, the width will only update in 2ns steps. This assures that the width accuracy specification is still met.

⁽³⁾ Typical current input is defined as the current consumed when all 4 channels are pulsing into high impedance loads at 5V, rate of 10Hz, 50% duty cycle, and with the Bluetooth option disabled.

⁽⁴⁾ Maximum current input is defined as the current consumed when all 4 channels are pulsing into 50 Ohm loads at 5V, active low mode, and with the Bluetooth option enabled.

10. Appendix B – Bluetooth Option

Overview

The Bluetooth wireless communications capability is an additional feature on the 9250 series. Upon proper installation of the Bluetooth device and drivers on the user end, the 9250 may be controlled in a wireless fashion by means of the same 9250 application or by using any generic communication terminal program.

Power

When using the Bluetooth option, the 9250 does not need to be directly connected to a USB 2.0 port to operate correctly; although, it *must* be directly connected to a +5VDC $\pm 250\text{mV}$ ($\geq 1.5\text{A}$) wall-mount supply (or equivalent) to function properly. The multi-functional power button, labeled “Run/Stop,” functions the same as before and will turn on the 9250 when pressed once.

Initialization & Connectivity

If the device being used to communicate with the 9250 is *not* already equipped with Bluetooth capabilities, an external Bluetooth device and supporting software/drivers must be purchased and properly installed. It should be noted that many laptops, tablets, and smartphones are already equipped with Bluetooth capabilities. Once the device is properly installed, carry out the following steps to connect to the 9250 in a wireless fashion:

- Turn on the Bluetooth device. On a Windows based PC, this can be carried out by right clicking the Bluetooth icon in the taskbar followed by clicking “turn on Bluetooth.” On tablet or smartphone devices, this should be located in the device settings.
- Once Bluetooth is enabled/turned on, scan for a device on a Windows based PC by carrying out the following:
 - Navigate to Bluetooth devices by means of the icon in the taskbar or through Devices and Printers via Control Panel.
 - Click the “Scan for a Device.” This will search for surrounding Bluetooth devices.
- When the 9250 is found, it should *nominally* show up as “Emerald-####.” The “####” represents the last 4 MAC address digits of the 9250’s internal Bluetooth device. The device may also show up as the entire 12 digit MAC address (ex: 00:06:66:45:1B:28). Finally, the device may also show up as “FireFly-####” where again the “####” represents the last 4 MAC address digits of the 9250’s internal Bluetooth device.
- It is recommended that the :SYST:COMM:BLUE:MAC? command be sent through the 9250 Application or other generic terminal program to confirm the correct device.
- When the correct device is found, right click and select “pair.” When the dialogue box opens asking for the Passkey, enter “**1234**” and click OK.

- When the Bluetooth device is properly paired, connect to the 9250 on a Windows based PC by carrying out the following:
 - Right click the Bluetooth icon in the taskbar and click Bluetooth places.
 - Right click the “Emerald-####” and click “Connect Bluetooth Serial Port (COM##) where ## is recognized port number.
- A message will appear indicating when connect wirelessly to the 9250.
- When using any command terminal, be sure to set and/or confirm the baud rate is 115200 bps.
- One may now use the 9250 Application (see “9250 Application) or any generic communication terminal program to begin wireless communications.
 - It should be noted that the 9250 Application automatically detects the port which the device is on. When using a generic communication terminal program, be sure to select the correct Com port in which the device was installed on.

11. Appendix C – TZ50 (Impedance Match Option)

TZ50 Overview

This “TZ50” option allows a user to terminate into a 50 Ohm load while maintaining output amplitudes of at least 4 Volts. All other functionality of the module is the same as the 9250. The output may be adjusted accordingly as before; although, due to the alternate internal circuitry, one should expect to see lower amplitudes *when terminated into a 50 Ohm load*. This concept is due to the voltage divider theory in which:

$$V_{out} = \left[\frac{Z_2}{Z_1 + Z_2} \right] * V_{in}$$

$Z_1 =$ Output impedance (~8 Ohms)

$Z_2 =$ External load

$V_{out} =$ Voltage Across Z_2

$V_{in} =$ Set Voltage (3.3V – 5V)

When terminated into high impedance loads ($\geq 1K$ ohm), one should expect to see the set amplitude, accompanied with *substantial* overshoot and ringing. See Figures D.1 and D.2 for visual representations of these scenarios.

This option cannot be mixed with a standard output. If ordered, the TZ50 will be applied to every channel.

For more information on upgrading and/or purchasing the TZ50 option, please contact sales:

sales@QuantumComposers.com
www.QuantumComposers.com
1.800.510.6530

TZ50 Specifications

<i>TZ50 Specifications</i>	MIN	TYP	MAX	UNIT
Output Module				
Output Impedance	-	8	-	Ohms
Output Level	3.3 – 5.0 VDC into $\geq 1K$ ohm 2.8 – 4.4 VDC into 50 ohm			
Output Current	5mA typical into 1K ohm 86mA typical into 50 ohm			
Rise Time (10% - 90%)	< 1ns typical @ 5V (High Imp) < 2ns typical @ 4.4V (50 ohm)			
Slew Rate	2	-	-	V/ns
Overshoot	< 100mV + 85% of pulse amplitude into $\geq 1K$ ohm < 100mV + 20% of pulse amplitude into 50 ohm			

Terminating Into 50 Ohms

The following figure shows a typical pulse when set to 5V upon being terminated into a 50 Ohm load:

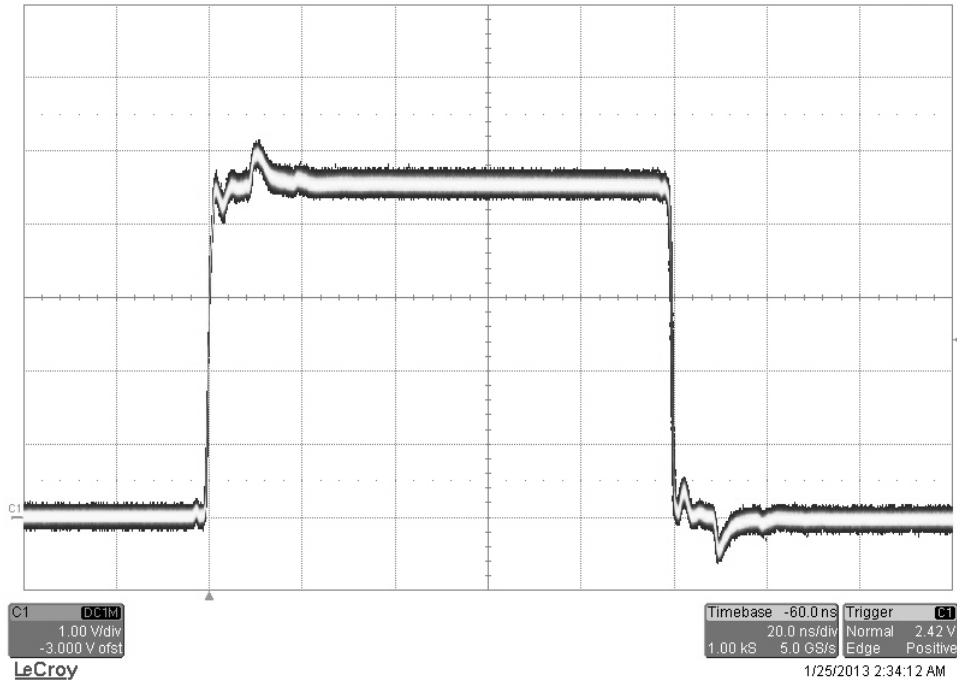


Figure C.1 – TZ50 Option Into 50 Ohm Load

Terminating Into High Impedance

The following figure shows a pulse when set to 5V upon being terminated into high impedance:

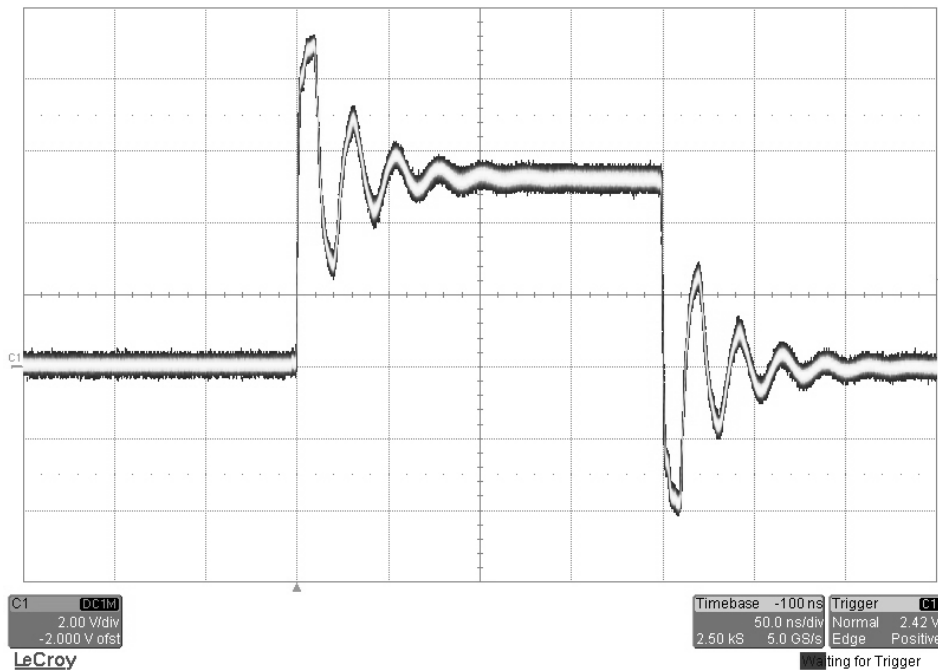












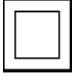









Figure C.2 – TZ50 Option Into High Impedance Load

12. Appendix D – Safety Symbols

Safety Marking Symbols

This section provides a description of the safety marking symbols that may appear on the instrument. These symbols provide information about potentially dangerous situations which can result in death, injury, or damage to the instrument and other components.

Symbol	Publication	Description/Comment
	IEC 417, No. 5031	Direct current.
	IEC 417, No. 5032	Alternating current.
	IEC 417, No. 5033	Both direct and alternating current
	IEC 617-2 No. 02-02-06	Three-phase alternating current
	IEC 417, No. 5017	Earth (ground) terminal. Primarily used for functional earth terminals which are generally associated with test and measurement circuits. These terminals are not for safety earthing purposes but provide an earth reference point.
	IEC 417, No. 5019	Protective Earthing conductor terminal. This symbol is specifically reserved for the protective conductor terminal and no other. It is placed at the equipment earthing point and is mandatory for all grounded (Class I) equipment .
	IEC 417, No. 5020	Frame or chassis terminal. Used for points other than protective conductor and functional earth terminals where there is a connection to accessible conductive terminals to advise the user of a chassis connection.
	IEC 417, No. 5021	Equipotentiality Used in applications where it is important to indicate to the operator that two or more accessible functional earth terminals or points are equipotential.
	IEC 417, No. 5007	On (Supply)
	IEC 417, No. 5008	Off (Supply)

	IEC 417, No. 5172	Class II Equipment protected by double insulation or reinforced insulation. The equipment typically does not require a Safety Ground (Protective Ground).
	ISO 3864, No. B.3.6 Background color - yellow; symbol and outline - black	Caution, risk of electric shock
	IEC 417, No. 5041 Background color - yellow; symbol and outline - black	Caution, hot surface
	ISO 3864, No. B.3.1 Background color - yellow; symbol and outline - black	Caution (refer to accompanying documents) used to direct the user to the instruction manual where it is necessary to follow certain specified instructions where safety is involved.
	IEC 417, No. 5268-a	In-position of bistable push control
	IEC 417, No. 5269-a	Out-position of bistable push control
	IEC 60417, No. 5009	Standby/On Symbol
	-	Indicates compliance with the WEEE Directive. Please dispose of the product in accordance with local regulations and conventions.
	CE Mark	Indicates compliance with European Union Legislation for the relevant Safety (Low Voltage Directive 2006/95/EC) and EMC (EMC Directive 2004/108/EC) requirements.
	UKCA Mark	Indicates compliance with the UK Declaration of Conformity.

13. Appendix E – CE/UKCA Declaration of Conformity



MANUFACTURERS DECLARATION OF CONFORMITY

Application of Council Directive(s) EMC Directive 89/336/EEC
Low Voltage Directive 73/23/EEC 93/68/EEC

Manufacturer's Name Quantum Composers, Inc.

Manufacturer's Address 212 Discovery Drive
Bozeman, Montana 59718

Model Name 9200 Series

Starting Serial No. 3615

Year of Manufacture 2012

Conformance to EN 61326-1: 2006 Basic Requirements
EN 61010-1: 2010 Part 1

We, the undersigned, hereby declare that the equipment specified above conforms to the above Directive(s).

Location Bozeman, Montana Representative Name Paula Carstenson

Date September 12, 2012 Title V.P. Product Development


(Signature)

