



Cloning a Pulse Generator

A unique feature of the Quantum Composers' pulse generators is the ability to clone the settings of one unit on to a second unit. Cloning the settings reduces the amount of time spent setting up a recently purchased unit or even a loaner unit if your unit needs to be returned for calibration.

In order to clone a unit's settings to a second unit, you'll need the appropriate .iqf (instrument query file) for your unit and the communications terminal software (available from the Quantum Composers website). After installing the Comm Terminal software make sure that communication is established with the pulse generator. There is a technical guide available from the QC website on how to install and use the Comm Terminal software (www.quantumcomposers.com/support/support-down/category/technical-notes).

Downloading parameters

Once communication is established, select tools>instrument parameters>download settings. A pop-up window will appear that has two buttons with progress bars next to them (figure 1).

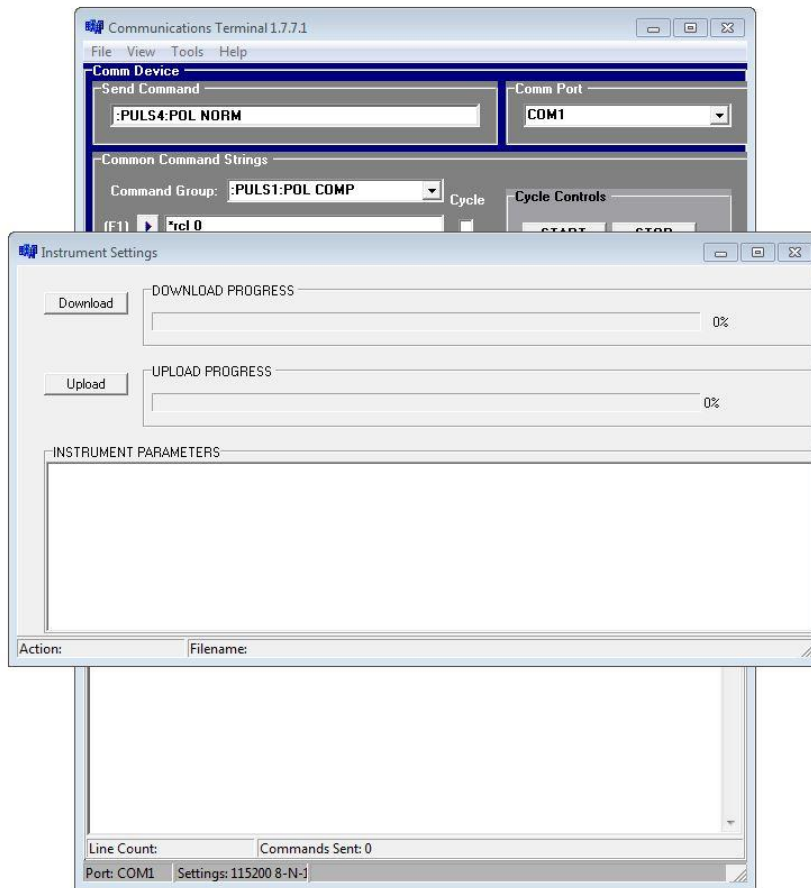


Figure 1

To export the settings from the unit select the download button. A second screen will appear asking for you to select the .iqf file. Select the appropriate "settings only" .iqf file and then select the open button. The software will return to the first pop-up screen and a string of text commands should begin to appear in the lower portion of the software. As the settings are extracted from the unit the download progress bar will begin to fill up.

Once the settings are fully extracted the software will ask you to save the file. This file will be an .irf file (instrument response file). This file is a simple text file that contains all of the instrument parameters.

Uploading parameters

Uploading the settings is similar to downloading. Select tools>instrument parameters>upload settings. From the pop-up window select upload and the software will ask you to select a .irf file. Once the .irf file is selected press open and the settings will begin to be sent to the second unit. When the upload is complete the progress bar will be full and the unit will be ready for operation.

This is also a useful feature when working with technical support remotely. With this feature the technicians at Quantum Composers can configure a unit for the desired output and a text file of the settings to you for upload to your unit. There are two settings that are not copied from one unit to another and those are system Baud rate and front panel display mode. All channel settings and all of the settings in the memory locations are copied from one unit to another.

The ability to clone settings from one unit to another is just one of many unique and powerful features that the Quantum Composers pulse generators have to offer. If there are any questions about how any of our units operate or if there are special requirements for your project, please contact support@quantumcomposers.com and view our website at www.Quantumcomposers.com for our latest product offerings.